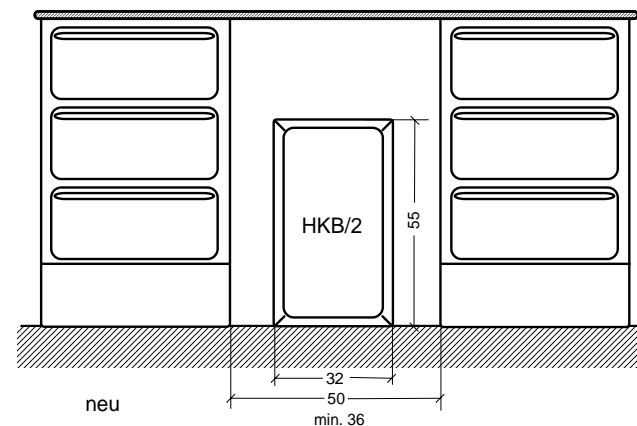
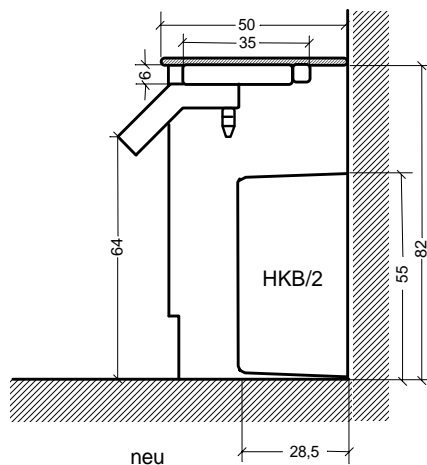
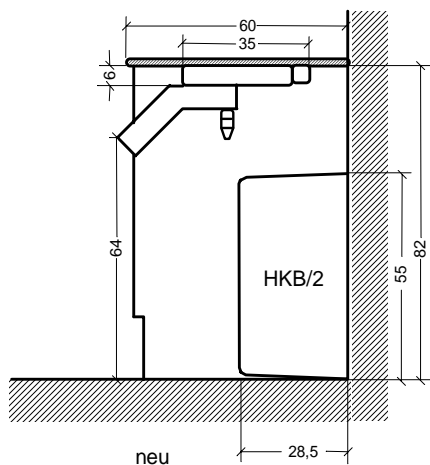
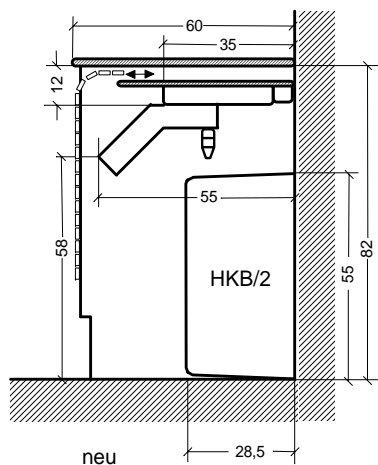
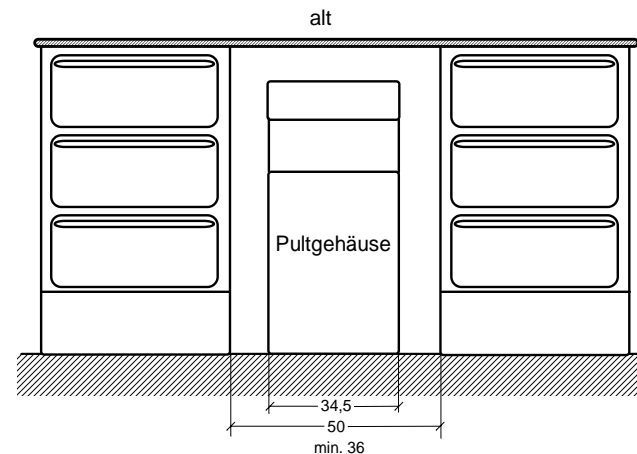
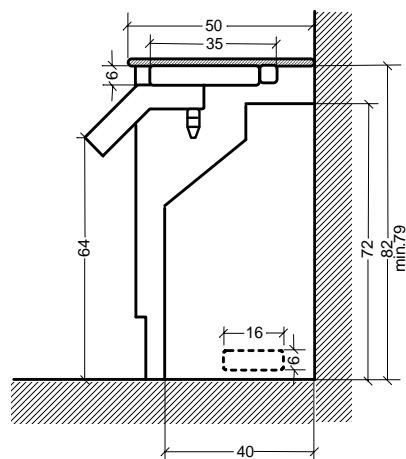
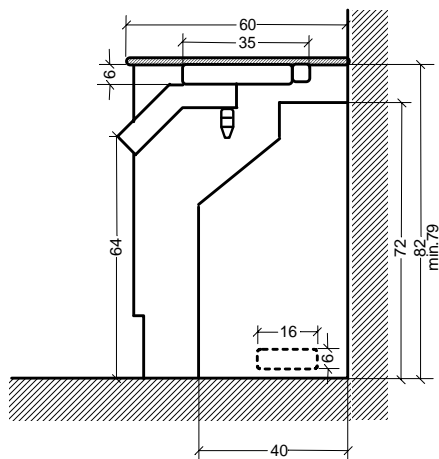


Geräteauszug U1300HK

Nischenbreite bei 5 Köcher = min. 36  
 Nischenbreite bei 6 Köcher = min. 38  
 Nischenbreite bei 7 Köcher = min. 43



M=ca. 1:20

|                  |         |          |         |                     |                |
|------------------|---------|----------|---------|---------------------|----------------|
| <b>ULTRADENT</b> |         | Geändert | Name.   | <b>Konzept 8000</b> | Archiv Nr.     |
|                  |         | 10.05    | Koch G. |                     | U1300HK_Einbau |
| Bearb.           | Gepr.   | 07.09    | Koch G. |                     | gültig ab:     |
| Koch G.          | Koch G. |          |         |                     | Best.Nr.       |
| 1.00             | 1.00    |          |         |                     |                |